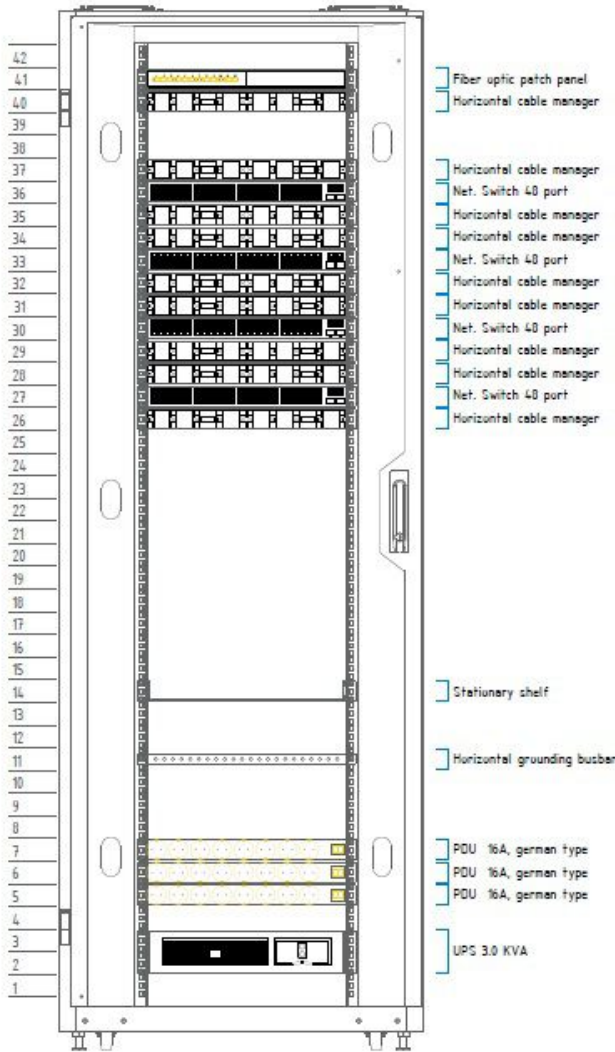
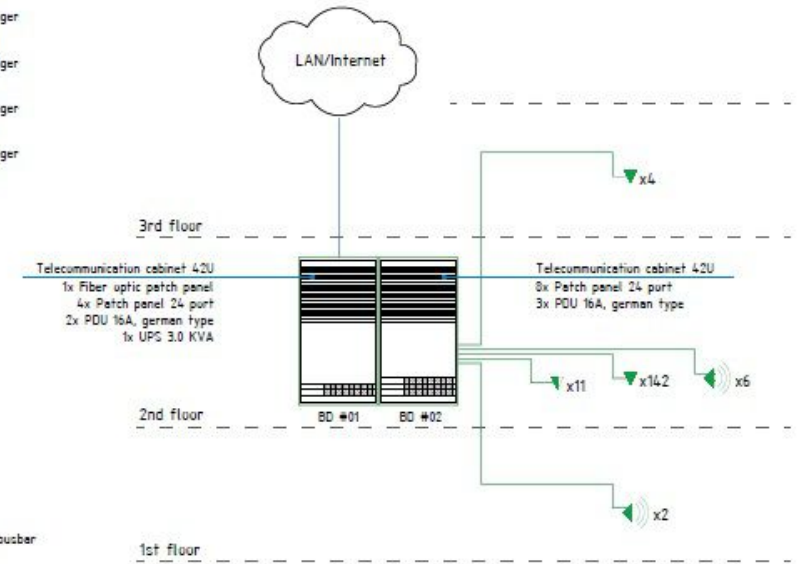
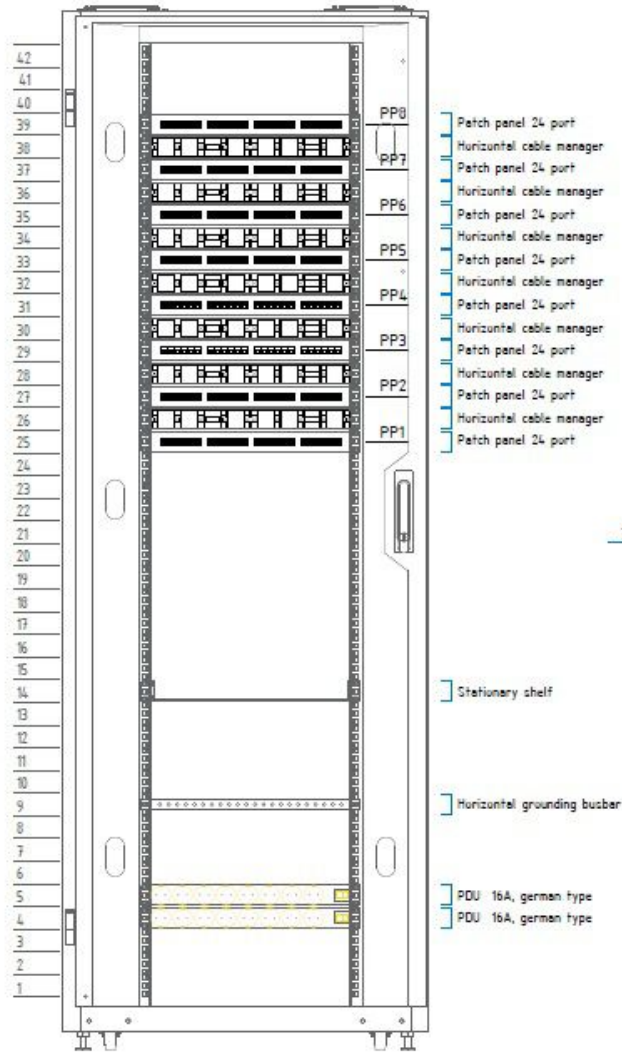


Building Distribution #03 (Active eq.)



Building Distribution #02 #02 (SCS)

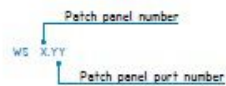


				SCS-02
Designer	A. Sherlyan		Structured cabling system	Sheet 02
			Hardware deployment scheme in network rack. Telecommunication network diagram	Sheets 09

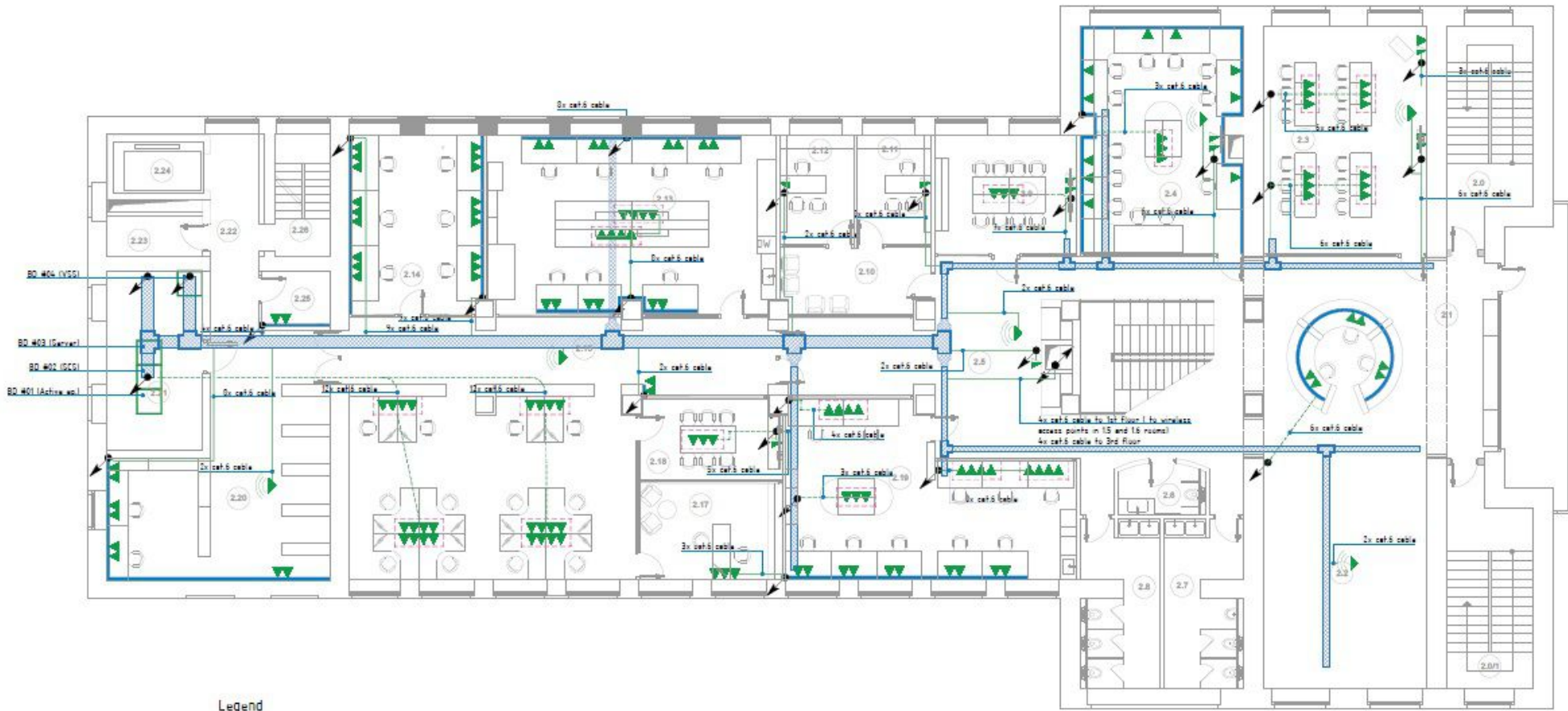


Legend

Name	Design
Telecommunication cabinet	
Flush-mounting box	
Wireless access point	
Single RJ45 socket Mosaic	
Double RJ45 socket	
PVC cable trunk	



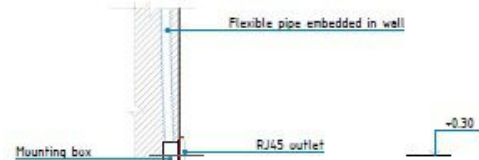
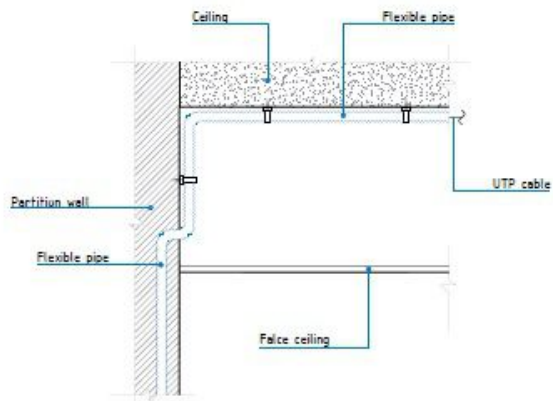
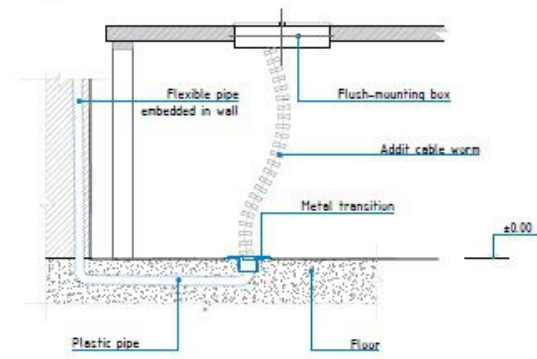
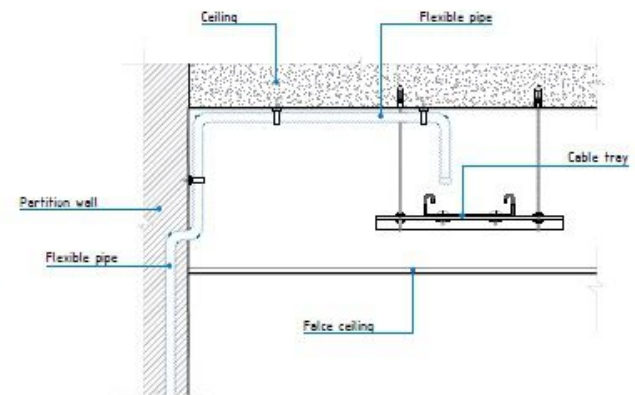
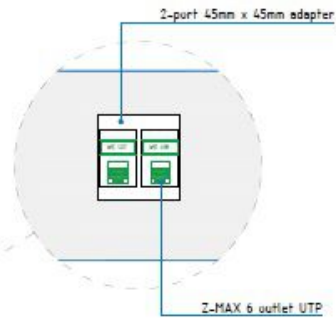
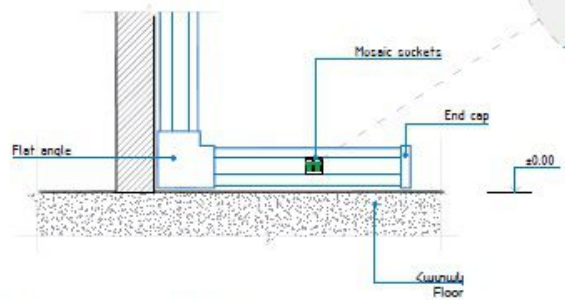
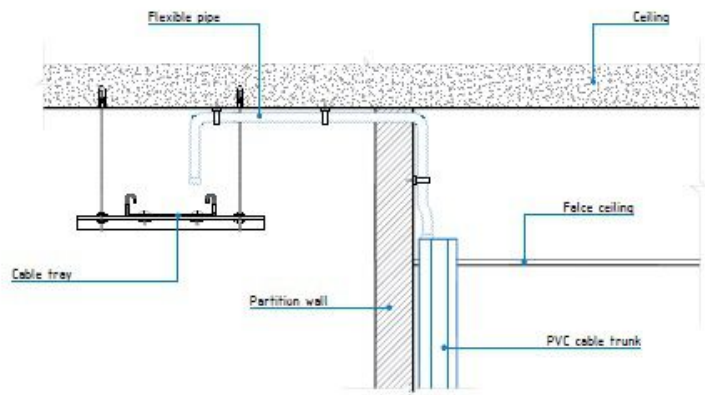
Designer	A. Shanbayan	SCS-03	Sheet	03
		Structured cabling system	Sheet	04
		Layout of Location and labeling of structured cabling system sockets, Second floor, M 1/100		



Legend

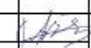
Name	Design
Telecommunication cabinet	
Metal cable tray	
Flush-mounting box	
Wireless access point	
Single RJ45 socket Mosaic	
Double RJ45 socket	
PVC cable trunk	
U/UTP cat.6 cables in flexible pipe	
U/UTP cat.6 cables in flexible pipe (under the floor)	

				SCS-04
Designer	A. Gharibyan		Structured cabling system	Sheet 04 of 09
			Layout of cable management equipment. Second floor. M 1:100	



				SCC-06
Designer	A. Sherbayan	<i>[Signature]</i>	Structured cabling system	Sheet 06 of 06
			Examples of structured cabling system equipments installation	

№	Name and technical characteristic	Type, typing document extensive list	Brand of equipment / material	Brand	Unit	Quantity	Note
1	2	3	4	5	6	7	8
10.3	2-port 45mm x 45mm adapter for a MAX, Z-MAX or TERA outlet		MX-45-02-02L	Siemon	pcs	56	
11	2xRJ45 double socket - category 6 UTP wall mount						
11.1	Category 6 flat MAX outlet, white, T568A/B, rear strain relief cap		-	Siemon	pcs	16	
11.2	2-port single gang 10G faceplate for MAX, Z-MAX or TERA® outlets		10GMX-BFP-02-02	Siemon	pcs	8	3x3 british style faceplate
12	Outdoor double socket for WIFI						
12.1	Category 6 UTP Ruggedized G2 Z-MAX outlet, T568A/B		XG2-Z6	Siemon	pcs	16	
12.2	Ruggedized G2 outlet dust cap with nylon retention tether		XG2-CAP	Siemon	pcs	16	
12.3	Ruggedized surface mount box, 2-port, supplied with 2 cable entry compression fittings		X-IBOX-02	Siemon	pcs	8	
13	Wireless access point						
13.1	Wireless access point		-	-	pcs	8	
14	U/UTP cat.6 cable						
14.1	System 6® UTP 4-Pair Cable, LSOH (IEC 60332-1, IEC 60332-3-22), Violet Jacket, Class Eca, Dca. 305m		9C6L4-E3-RXA	Siemon	pcs	33	
14.2	Category 6 UTP, Ruggedized Plug-to-Modular RJ-45 Plug w/Yellow Boot, TPE, Black Jacket, 3m		XC6-03-B05T	Siemon	pcs	16	WiFi outlet patch cord
14.3	Category 6 MC, double-ended, 4-pair UTP stranded modular patch cord, T568A/B, clear boot, 2m		MC6-02M-02	Siemon	pcs	174	
14.4	Category 6 MC, double-ended, 4-pair UTP stranded modular patch cord, T568A/B, clear boot, 2m		MC6-01M-02	Siemon	pcs	158	Workstation patch cord
15	Uninterruptible Power Supply						
15.1	Uninterruptible Power Supply 3000VA		-	APC	Item	2	
16	Cable channels and installation materials						
16.1	Flush-mounting box 8 modules		-	-	pcs	8	
16.2	Metal transition		-	-	pcs	8	
16.3	Addit cable worm		-	-	pcs	8	
16.4	Metal cable tray 400x50mm		-	-	m	31	
16.5	T-shaped bend for metal cable tray 400x50mm		-	-	pcs	5	

							SCS-07
Designer	A. Gharibyan			Structured cabling system		Sheet	Sheets
						07	08
				Specifications of equipment and materials			